

4LVM4, 5LVM1, 6LVM2

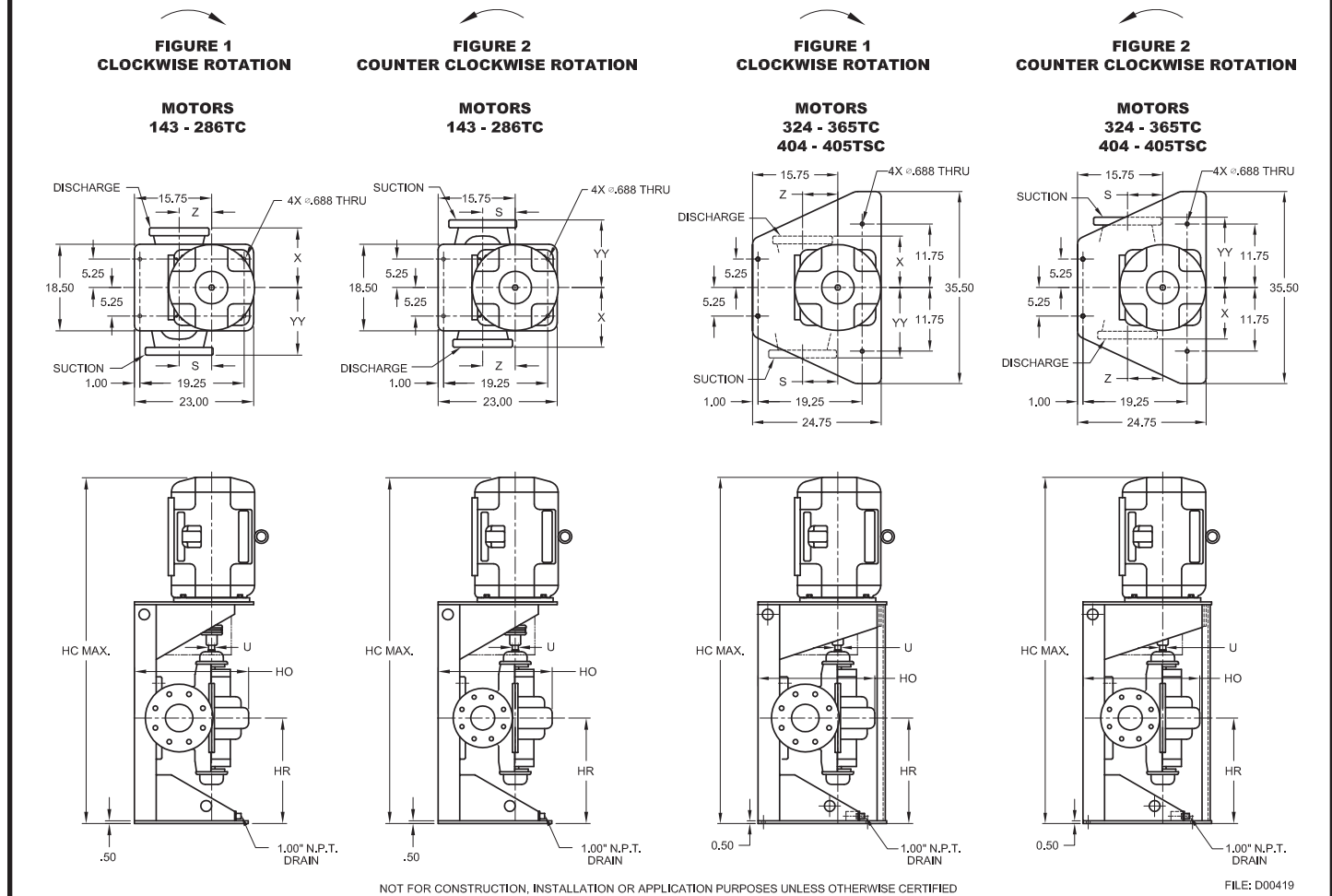
Spacer Coupling/C-Face Motors
4", 5" & 6" Discharge, Standard (Inches)



www.cranepumps.com

Split Case Pumps - Vertically Mounted

PUMP NO.	PUMP:	MOTOR:	VOLTS:
FOR:	TDH:	HP:	HZ:
CERT. BY:	ROTATION:	PHASE:	FRAME:
DATE:	FIGURE NO:	ENCLOSURE:	



DIMENSIONS IN INCHES							
PUMP	DISCH.	SUCT.	HO	S	X	YY	Z
4LVM4	4	6	24.63	6.50	9.50	12.00	6.50
5LVM1	5	6	27.25	8.25	15.00	15.50	8.25
6LVM2	6	8	26.88	7.13	13.00	15.50	8.00

KEYWAY	U
.313 x .156	1.375

NOTES:
1. ALL DIMENSIONS ±.13 EXCEPT WHERE NOTED.
"HR" DIM. ±.25

DIMENSIONS IN INCHES						
HORSEPOWER			3 PH MOTOR FRAME	HC	HR	SHAFT SEP
3500	1750	1150				
1.5	1	.75	143TC	59.38	25.00	3.5
2 & 3	1.5 & 2	1	145TC	59.38	25.00	3.5
5	3	1.5	182TC	61.94	24.31	3.5
7.5	5	2	184TC	61.94	24.31	3.5
10	7.5	3	213TC	67.00	23.81	5.0
15	10	5	215TC	67.00	23.81	5.0
20	15	7.5	254TC	71.69	23.19	5.0
25	20	10	256TC	71.69	23.19	5.0
30	25	15	284TC	73.19	22.56	5.0
40	30	20	286TC	73.19	22.56	5.0
50	40	25	324TC	75.50	21.94	5.0
60	50	30	326TC	75.50	21.94	5.0
75	60	40	364TC	76.81	21.31	5.0
100	75	50	365TC	76.81	21.31	5.0
125	100	60	404TSC	76.81	22.94	5.0
150	125	75	405TSC	76.81	22.94	5.0

SECTION 1100
PAGE 12
DATE 4/14



PUMPS & SYSTEMS

A Crane Co. Company

USA: (937) 778-8947 • Canada: (905) 457-6223 • International: (937) 615-3598

Split Case Pumps - Vertically Mounted

PUMP NO. FOR: CERT. BY:	DATE:	PUMP: TDH: GPM: ROTATION: FIGURE NO:	MOTOR: HP: RPM: PHASE: ENCLOSURE:	VOLTS: HZ: FRAME:
--	--------------	---	--	--

FIGURE 1
CLOCKWISE ROTATION

FIGURE 2
COUNTER CLOCKWISE ROTATION

FIGURE 1
CLOCKWISE ROTATION

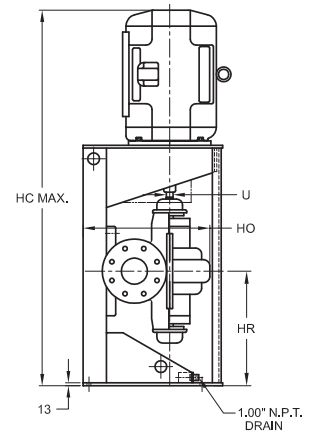
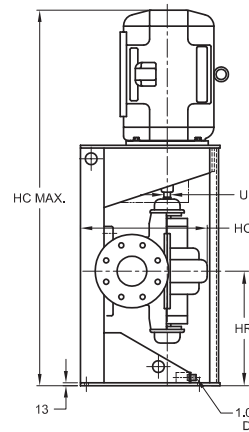
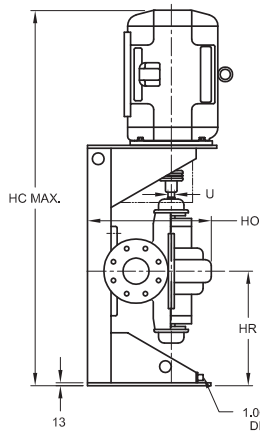
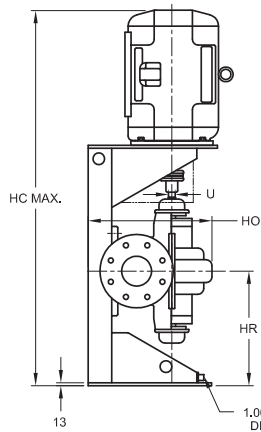
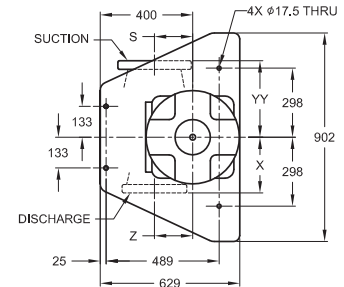
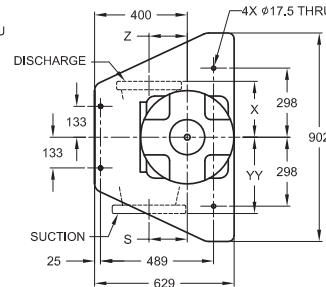
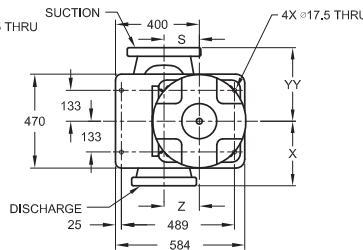
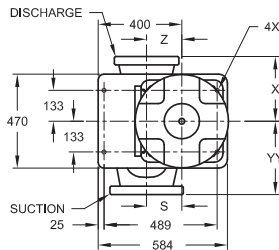
FIGURE 2
COUNTER CLOCKWISE ROTATION

MOTORS
143 - 286TC

MOTORS
143 - 286TC

MOTORS
324 - 365TC
404 - 405TSC

MOTORS
324 - 365TC
404 - 405TSC



NOT FOR CONSTRUCTION, INSTALLATION OR APPLICATION PURPOSES UNLESS OTHERWISE CERTIFIED

FILE: D00419m

DIMENSIONS IN MILLIMETERS (Except where noted)

PUMP	DISCH. (inch)	SUCT. (inch)	HO	S	X	YY	Z
4LVM4	4	6	626	165	241	305	165
5LVM1	5	6	692	210	381	394	210
6LVM2	6	8	683	181	330	394	203

KEYWAY	U
8 x 4	35

NOTES:

- ALL DIMENSIONS ± 3.3mm EXCEPT WHERE NOTED.
"HR" DIM. ± 6.3mm

DIMENSIONS IN MILLIMETERS (Except where noted)

HORSEPOWER			3 PH MOTOR FRAME	HC	HR	SHAFT SEP
3500	1750	1150				
1.5	1	.75	143TC	1508	635	89
2 & 3	1.5 & 2	1	145TC	1508	635	89
5	3	1.5	182TC	1573	617	89
7.5	5	2	184TC	1573	617	89
10	7.5	3	213TC	1702	605	127
15	10	5	215TC	1702	605	127
20	15	7.5	254TC	1821	589	127
25	20	10	256TC	1821	589	127
30	25	15	284TC	1859	573	127
40	30	20	286TC	1859	573	127
50	40	25	324TC	1918	557	127
60	50	30	326TC	1918	557	127
75	60	40	364TC	1951	541	127
100	75	50	365TC	1951	541	127
125	100	60	404TSC	1951	583	127
150	125	75	405TSC	1951	583	127